

Bringing research home:

Reclaiming research to tell the story of climate change in
Kluane First Nation Traditional Territory

June 2021

Kate Ballegooyen

Natural Resource Manager
Kluane First Nation
resource.manager@kfn.ca

Brian Horton

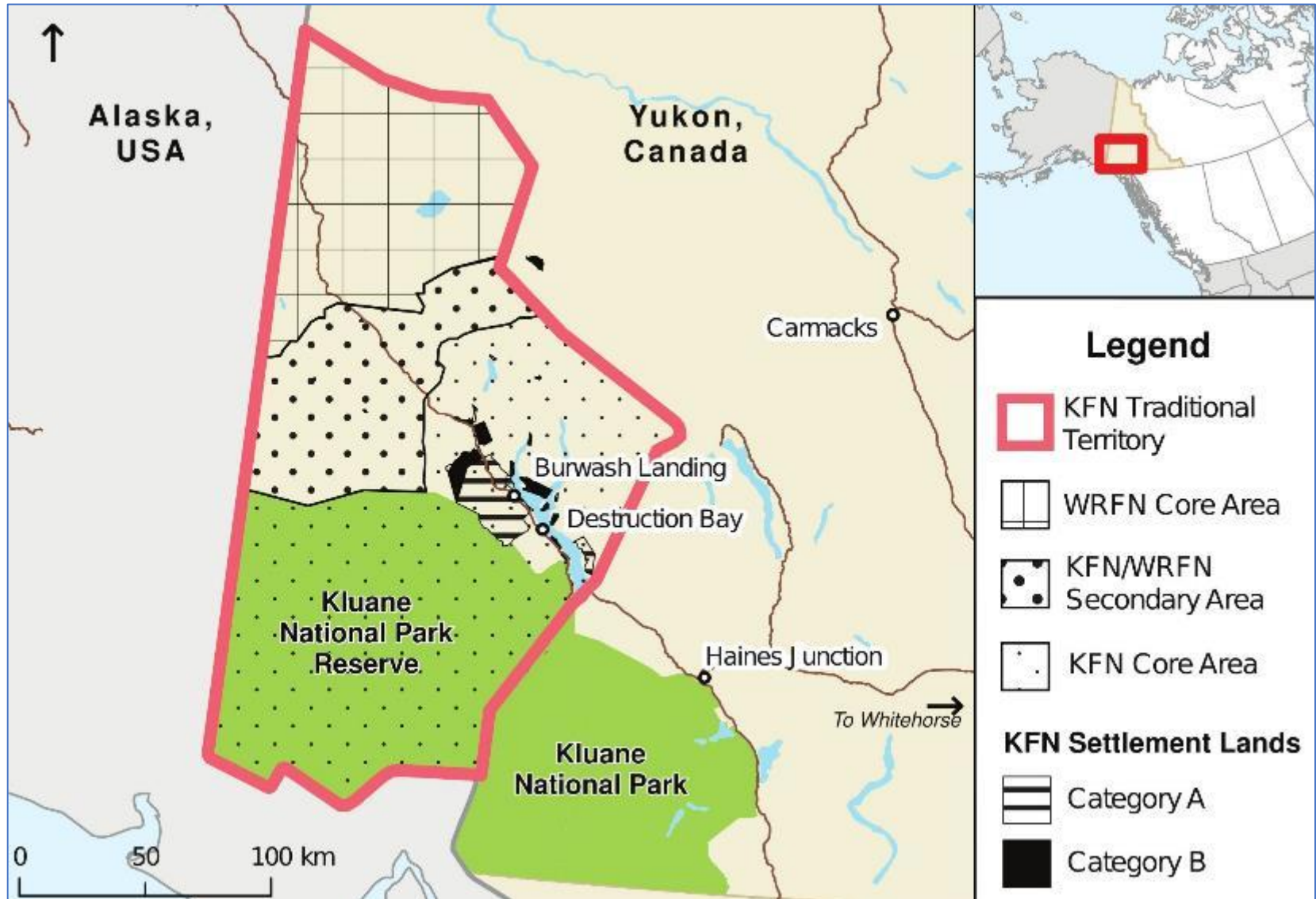
Manager, Research Centre
Yukon University
bhorton@yukoncollege.yk.ca

Sonia Wesche

Associate Professor
University of Ottawa
swesche@uottawa.ca



Kluane First Nation Traditional Territory (Southwest Yukon)



Goal 1: Compile historical & existing climate change research conducted in KFN Traditional Territory

Goal 2: Make this research accessible to community members



The screenshot shows a search results page for 'WO klwane'. At the top, there are logos for ASTIS (Arctic Science and Technology Information System) and SISTA (Système d'information sur les sciences et les technologies arctiques). The search results are sorted by Record Number, with 1 to 10 of 638 records displayed. The results list various research papers with their titles, investigators, affiliations, and years.

ASTIS Arctic Science and Technology Information System
SISTA Système d'information sur les sciences et les technologies arctiques

Hit List for Search: WO klwane
Sorted by Record Number [Sort by Year](#) [Sort by Author](#)
Records **1 to 10** of 638. [Next](#) [New Search](#)

RP [Lhú'sán Man \(Kluane Lake\) water balance based on water chemistry observations](#) / Moorman, B. [Investigator] University of Calgary [Affiliation] 2019

[Co-management of traditional foods : opportunities and limitations for food security in northern First Nation communities](#) / Cruickshank, A. Notten, G. Wesche, S. Ballegooyen, K. Pope, G. 2019 [Web Link](#)

RP [Analysis of landscape change in the lower Stims River \(A'sy Chu\), Kluane Park and Reserve](#) / Leipi, A. [Investigator] Laurentian University of Sudbury [Affiliation] 2019

RP [Autumn raptor migration surveys : Kluane Lake, Yukon, Canada](#) / Watson, J. [Investigator] HawkWatch International Inc. [Affiliation] 2019

RP [Bringing research home : reclaiming research to tell the story of climate change in Kluane First Nation traditional territory](#) / Wesche, S. [Investigator] University of Alberta [Affiliation] 2019

RP [Geological evolution of the Kluane Schist, southwest Yukon](#) / Gibson, J. [Investigator] Fraser University [Affiliation] 2019

RP [Analyzing the eastern Denali Fault using landslide deposits and terraces in the Kluane Lake area, Yukon Territory](#) / Whelan, N. [Investigator] University of Alberta [Affiliation] 2019

RP [Kluane Lake measurements educational project : CTD and turbidity measurements](#) / Timmermans, M.-L. [Investigator] Yale University [Affiliation] 2019

RP [Innovate climate change storytelling - Kluane First Nation participate in a climate change storytelling project](#) / University of Winnipeg [Affiliation] 2018

RP [Characterizing spatial & temporal dynamics for Lhú'sán Man \(Kluane Lake\) collaborative monitoring as a step towards identifying climate change in the Kluane Lake area](#) / McKnight, E. [Investigator] University of Alberta [Affiliation] 2018

Records **1 to 10** of 638. [Next](#) [New Search](#)

 **Research Databases**





[STP] - Web Map

[STP - Short description of the functionality of the map.]

Go to Web Map



[STP] - Kluane First Nation Research Priorities and

[STP - Info - Info - Info - Info - Info - Info - Info - Info - Info]

[Button]

Online Atlas: Climate Change Publications & Observations in KFN Territory

Home KFN 101 KFN and Research Map

Legend

Add Observation

- Survey Point

BRH_DB_MainTopics

Main Topic

- Animals
- Ecosystems
- Glaciers
- Water
- Geology
- Vegetation
- Humans
- Food Security
- Hazards
- Landscape Processes
- Permafrost

Filter Publications

Filter by topic

Main Topic is any of
0 Selected

Filter by author

Enter author's last name

BRH_DB_MainTopics

Date is between _____ and _____

Add Information

[+ Add Publication](#)

[+ Add Observation](#)

The map displays the KFN Territory with three distinct core areas: WRFN Core Area (top, teal), KFN-WRFN Core Area (middle, tan), and KFN Core Area (bottom, purple). Numerous colored circular markers (blue, green, orange, red) are scattered across the KFN Core Area, representing publication locations. The map includes a search bar, zoom controls, and a scale bar (60 km / 40 mi). The text 'Earthstar Geographics | Government of Y... Powered by Esri' is visible at the bottom of the map.

Publication List

Title	Link
'Boundary': mapping and visualizing climatically changed landscapes at Kaakawulsh Glacier and Kluane Lake	Link
2015 report of activities for ancient faults and their controls on mineralization in northern British	Link
2015-2016 Kluane Lynx Project Report - 2016	Link
2016 Kluane Snowshoe Hare Project Interim Report - 2016	Link
A river (used to) run through it: Piracy in the Yukon. - 2017	Link
Achievements of the EarthScope USArray in North America. - 2019	Link

Goal 3: Improve KFN engagement with research and researchers in KFN Territory

Review:

Research Permitting, Licensing, Guidelines, and Protocols For a Yukon/Northern/Indigenous context

WE WANT TO HEAR FROM YOU!

Kluane First Nation is developing its own set of 'Guidelines for Researchers' which will be shared with researchers to provide them with information and guidance on how best to respect and work with the community.

The 'Guidelines' will be based on community input.

What research done in a good way looks like in your community

- Great communication
 - community members are well-informed
 - actually caring
- Following up
- Community involvement (ex. dinner)
- KFN members involved for longer duration & more strongly involved

YOUR ADVICE TO RESEARCHERS

(How to promote meaningful & respectful relationships)

- ① ~~Research~~ + communicate
 - what you're doing, why, how & when
 - do I need to connect with someone's the appropriate / respectful way to do that?
- * Ongoing / updated platform to keep KFN members informed about research projects in community
 - willingness to learn & be in dialogue
- Keep people updated!
- Share the results
- Invite us in the presentation (ex. KFN youth, members involved)
- * Community dinner done in a good way (good food)
- * Positive attitude ☺
- * Attend community events & talk w/ people:
Build Relationships (person to person, us as researchers)
- * Maintain relationships over time

Researcher expectations

DRAFT

Introduction to research expectations



Respect Indigenous Knowledge/
Indigenous ways of being,
knowing, and living

[More info](#)

Learn about KFN

[More info](#)

Respect and kindness are the
most important

Have an open mind

Be flexible with timelines

Plan ahead

[More info](#)

Have good communication

[More info](#)

Give back to the community

[More info](#)

Work on a relevant project

[More info](#)

Involve community from very
beginning

Know what is/ isn't appropriate in
terms of cultural protocols

Help out at community functions
when appropriate

Come with humility and the
possibility that a) there are
other ways to see the world and
b) you could be wrong

Respect Indigenous Knowledge/
Indigenous ways of being,
knowing, and living

Be passionate about your work

Be present in the community

Treat KFN as equal partner with
recognition of rights via OCAP

[More info](#)

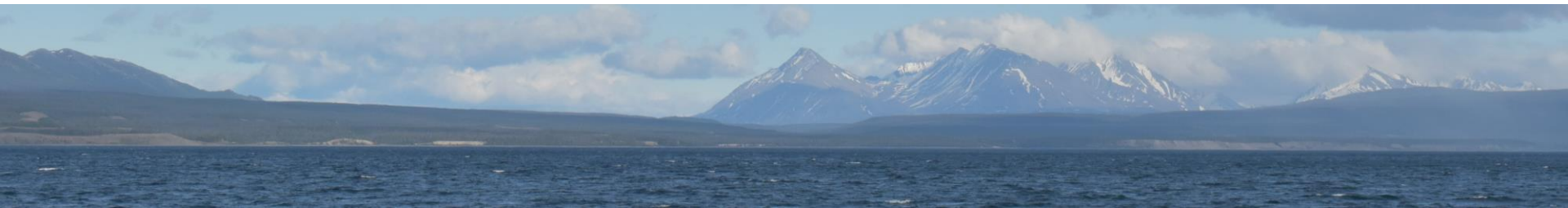
Lhù'ààn (Kluane) Research Summits (2018 & 2019)





2020-21 Successes

- Adapting to online working group meetings
- New engagements/ partnerships
 - Ikaarvik
 - DKRRC
- Hiring 2 KFN youth; collaborating with Ikaarvik- Barriers to Bridges to hold a workshop for 8 youth
- Community-driven
- Community voices/perspectives incorporated continuously and iteratively into emerging outputs



Major Headings; big messages to researchers...

Research Expectations - Content

Research priorities

Community Priorities for research?	Could be directly on the atlas (i think so)	Mechanism for KFN to determine and update research priorities?
------------------------------------	---	--

What does 'good' look like?
Doing research in a good way.

How to communicate with community

Involve community, plan ahead, understand KFN laws, respect, attend, assist at community functions; flexible on timelines; open mindedness; humility; exchange of information

How to approach our worldview?

reciprocate; equal partners; active involvement for field workers; person first, researcher second;

Report back...here are

Ensure relevance

What would lead to a researcher being

Learn About Us

- History of research in the region. Aware of past practices that have impacted the community; relationship with Park, Relationship with AINA/KLRS; Nothing written now.
- Expectation that researchers have learned about community...done for homework.
- Community perceptions of research/researchers now.
- Could be oral history instead of document?
- Community expectations of researchers
- OCAP
- "Step Zero"

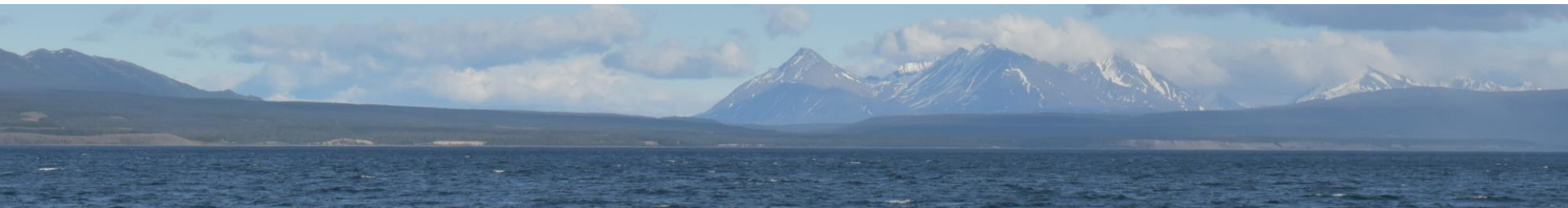
Summary of KFN Views of Western and Traditional Knowledge Systems

- Pay attention! Knowledge can be shared when you least expect it....
- When science and IK don't agree
- Indigenous ways of knowing, being and doing
- TK can't be put in unexplained ways
- "The researchers come a bit naively - thinking they're asking the right questions and "this is what I'm going to do". Often, those questions won't get you what you need, but there's a roundabout way to..."
- KFN Traditional Knowledge Policy (draft)
- IK Principles that relate to research; sample methods (Mary Jane and Carmen's story of sampling methods for frog)



Next steps

- Continuing the conversation and engagement with KFN community
- Completing Storymaps; updating and refining tools
- Developing case stories of researcher/community successes
 - Researchers who have met/exceeded expectations.
- Planning 2022 Research Summit (May/June - tentative)



Shäw níthän (thank you) Questions?

Kate Ballegooyen

Natural Resource Manager
Kluane First Nation
resource.manager@kfn.ca

Brian Horton

Manager, Research Centre
Yukon University
bhorton@yukoncollege.yk.ca

Sonia Wesche

Associate Professor
University of Ottawa
swesche@uottawa.ca

